

N/F SUBURBAN GENERAL HOSPITAL
BLOCK 18 - LOT 3
DEED BOOK 4706 PAGE NO 667

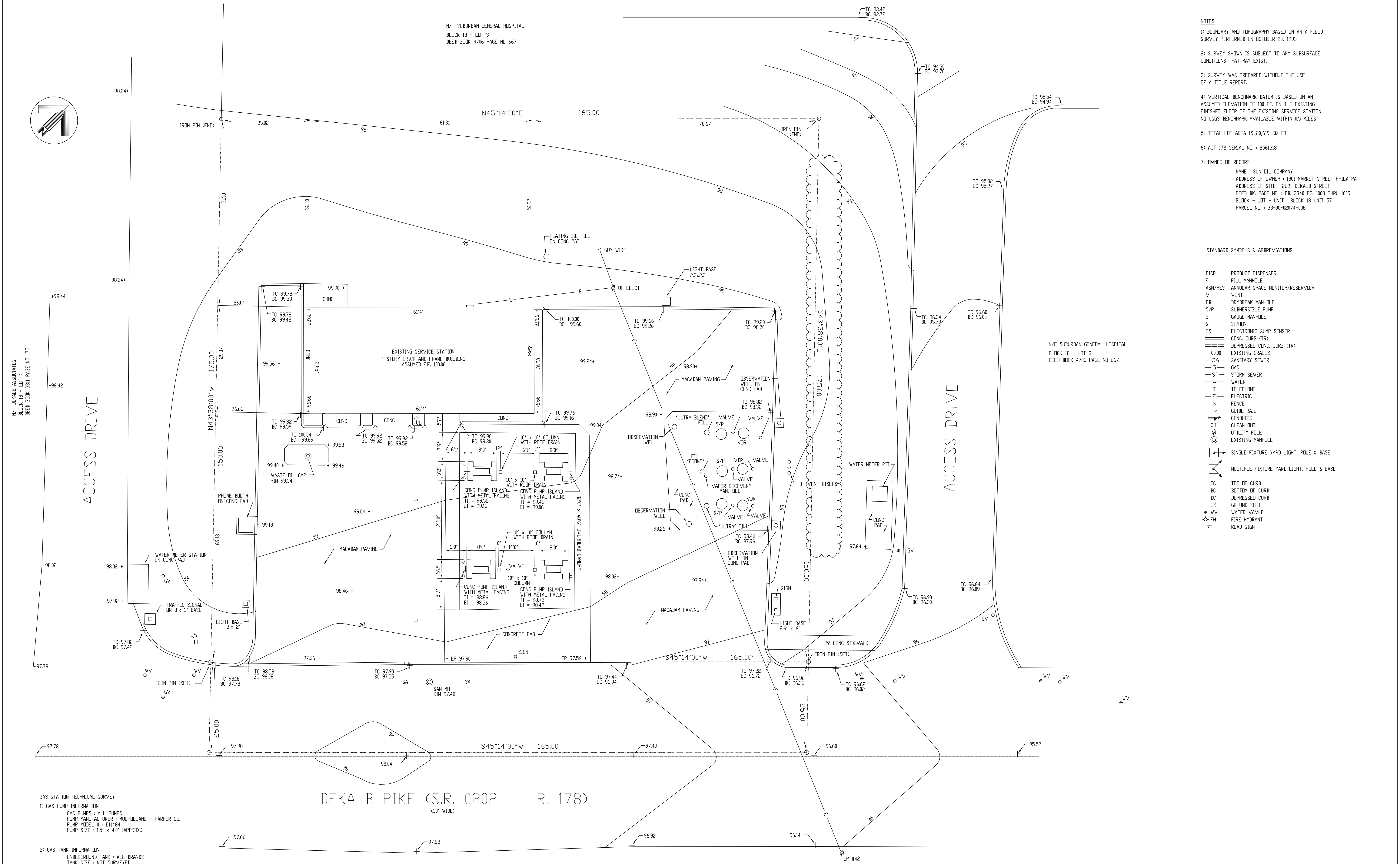
NOTES

- 1) BOUNDARY AND TOPOGRAPHY BASED ON A FIELD SURVEY PERFORMED ON OCTOBER 20, 1993
- 2) SURVEY SHOWN IS SUBJECT TO ANY SUBSURFACE CONDITIONS THAT MAY EXIST.
- 3) SURVEY WAS PREPARED WITHOUT THE USE OF A TITLE REPORT.
- 4) VERTICAL BENCHMARK DATUM IS BASED ON AN ASSUMED ELEVATION OF 100 FT. ON THE EXISTING FINISHED FLOOR OF THE EXISTING SERVICE STATION. NO USGS BENCHMARK AVAILABLE WITHIN 0.5 MILES.
- 5) TOTAL LOT AREA IS 20,619 SQ. FT.
- 6) ACT 172 SERIAL NO. = 2561318
- 7) OWNER OF RECORD

STANDARD SYMBOLS & ABBREVIATIONS

DISP	PRODUCT DISPENSER
F	FILL MANHOLE
ASM/RES	ANNULAR SPACE MONITOR/RESERVOIR
V	VENT
DB	DRYBREAK MANHOLE
S/P	SUBMERGIBLE PUMP
G	GAUGE MANHOLE
S	SIPHON
ES	ELECTRONIC SUMP SENSOR
---	CONC. CURB (CTR)
---	DEPRESSED CONC. CURB (CTR)
+ 00.00	EXISTING GRADES
---SA---	SANITARY SEWER
---	GAS
---	STORM SEWER
---	WATER
---	TELEPHONE
---	ELECTRIC
---	FENCE
---	GUIDE RAIL
---	CONDUITS
---	CLEAN DUT
---	UTILITY POLE
---	EXISTING MANHOLE
---	SINGLE FIXTURE YARD LIGHT, POLE & BASE
---	MULTIPLE FIXTURE YARD LIGHT, POLE & BASE
TC	TOP OF CURB
BC	BOTTOM OF CURB
DC	DEPRESSED CURB
GS	GROUND SHEET
WV	WATER W/VALE
FH	FIRE HYDRANT
---	ROAD SIGN

N/F SUBURBAN GENERAL HOSPITAL
BLOCK 18 - LOT 3
DEED BOOK 4706 PAGE NO 667



GAS STATION TECHNICAL SURVEY

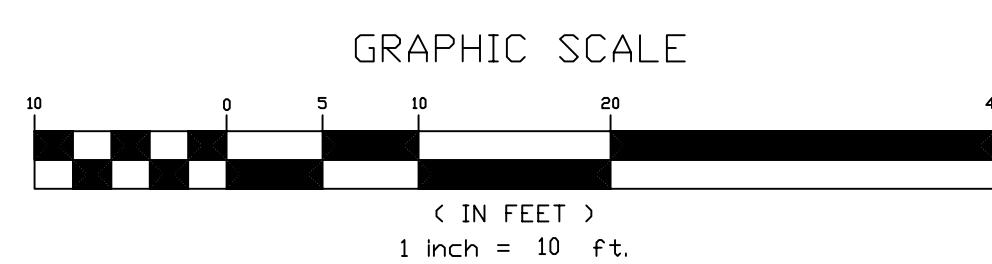
- 1) GAS PUMP INFORMATION
GAS PUMPS - ALL PUMPS
PUMP MANUFACTURER - MULHOLLAND - HARPER CO.
PUMP MODEL # - E1484
PUMP SIZE - 1.5' x 4.0' (APPROX.)
- 2) GAS TANK INFORMATION
UNDERGROUND TANK - ALL BRANDS
TANK SIZE - NOT SURVEYED

SURVEYOR'S CERTIFICATION

I DO HEREBY CERTIFY THAT THIS PLAN HAS BEEN PREPARED UNDER MY DIRECT SUPERVISION AND THE SURVEY PERFORMED IS IN ACCORDANCE WITH CURRENT ACCURACY STANDARDS. BOUNDARY LINES SHOWN ARE FROM DEEDS OF RECORD AND CLOSE MATHEMATICALLY. THERE ARE NO VISIBLE ENCROACHMENTS OF BUILDINGS OR STRUCTURES UNLESS NOTED.

DAVID T. ALEXANDER P.L.S. DATE

ALL DOCUMENTS PREPARED BY ROBERT E. BLUE CONSULTING ENGINEERS, P.C. ARE INSTRUMENTS OF SERVICE IN RESPECT OF THE PROJECT THEY ARE NOT INTENDED OR REPRESENTED TO BE SUITABLE FOR USE BY OWNER OR OTHERS ON EXTENSIONS OF THE PROJECT OR ON ANY OTHER PROJECT ANY REUSE WITHOUT WRITTEN VERIFICATION OR ADAPTATION BY ROBERT E. BLUE CONSULTING ENGINEERS, P.C. FOR THE SPECIFIC PURPOSE INTENDED WILL BE AT OWNERS SOLE RISK AND WITHOUT LIABILITY OR LEGAL EXPOSURE TO ROBERT E. BLUE CONSULTING ENGINEERS, P.C. AND OWNERS USE OF PLANS SHALL BE DEEMED AN AGREEMENT TO IDENTIFY AND HOLD HARMLESS ROBERT E. BLUE CONSULTING ENGINEERS, P.C. FROM ALL CLAIMS, DAMAGES, LOSSES, AND EXPENSES ARISING OUT OF OR RESULTING THEREFROM.



ROBERT E. BLUE
CONSULTING ENGINEERS, P.C.
BLUE BELL III
BLUE BELL PA 19422
(215) 542-9464

SEA Simoff Engineering Associates
PO Box 297 492 Main Street Chatham New Jersey 07928
Phone: (201) 635-0900 Fax: (201) 635-9215

REV. NO.	DATE	REVISIONS	DRAWN BY	CHK'D BY	APPV'D.
SUN COMPANY, INC. (R&M) Marketing Engineering Department Philadelphia, PA					
LOCATION: 2621 DEKALB PIKE EAST NORRITON TOWNSHIP MONTGOMERY COUNTY PENNSYLVANIA			PROJECT NO.		
APPROVED			FACILITY NO.		DRAWING NO.
CHECKED HS			0005-0443		SV-1
DRAWN I P					0
DATE 11/3/1993			SCALE = 10' = 1"		

THIS DRAWING IS AND SHALL REMAIN THE PROPERTY OF SUN COMPANY, INC. (R&M). USE, REPRODUCTION OR ALTERATION OF THIS DRAWING WITHOUT THE EXPRESSED WRITTEN PERMISSION OF SUN COMPANY, INC. (R&M) IS PROHIBITED.